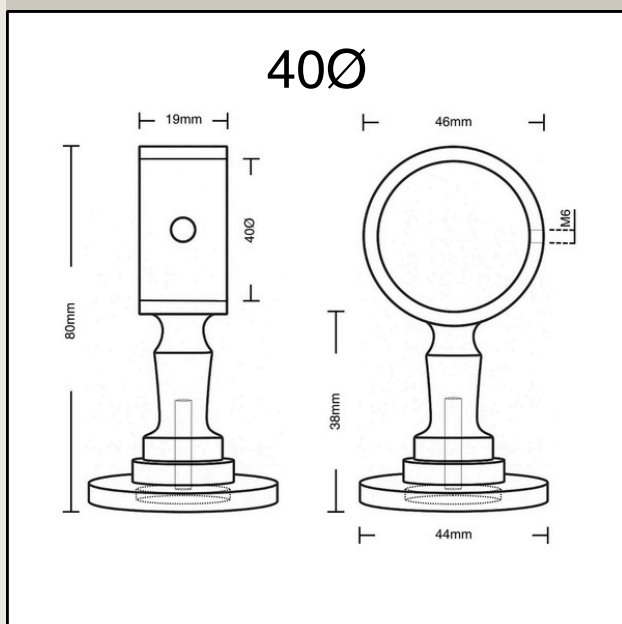
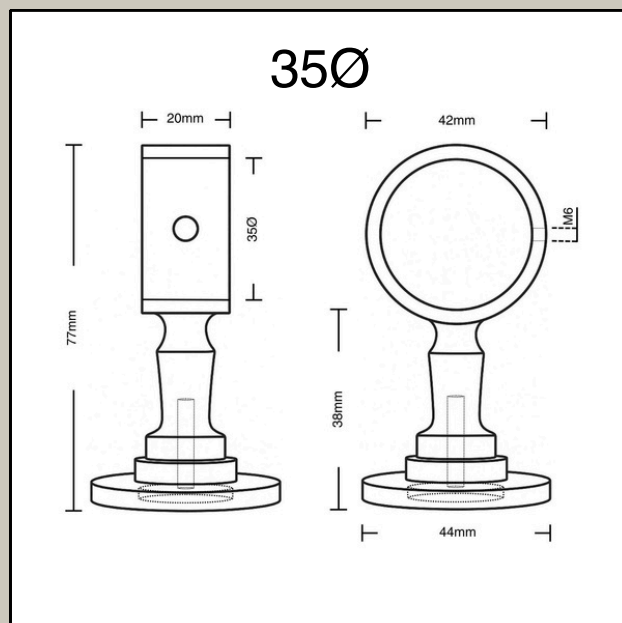
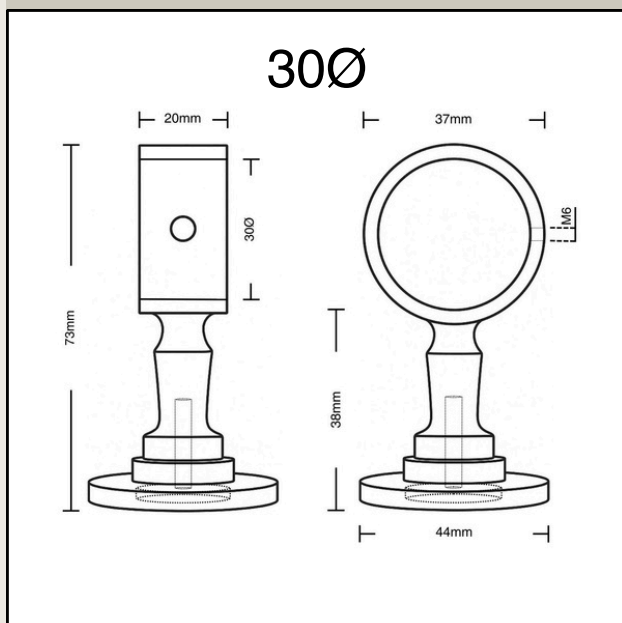
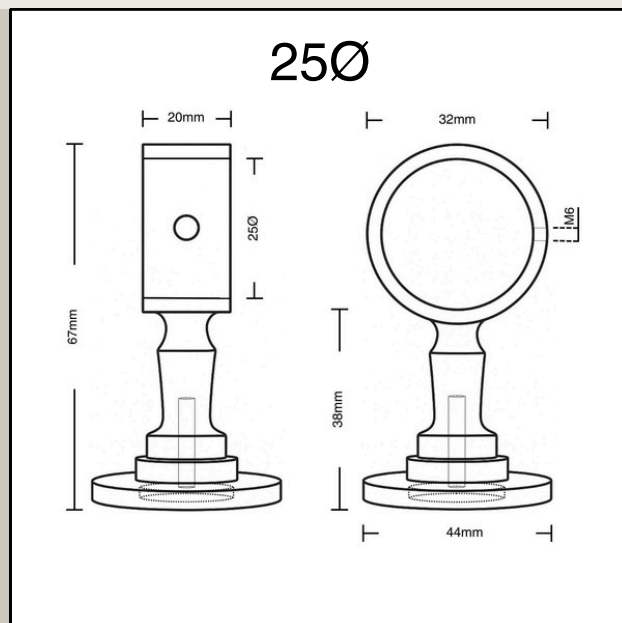
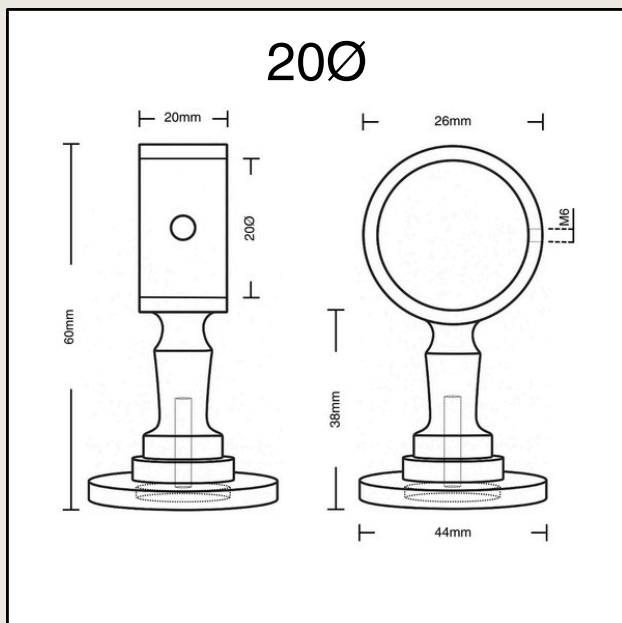
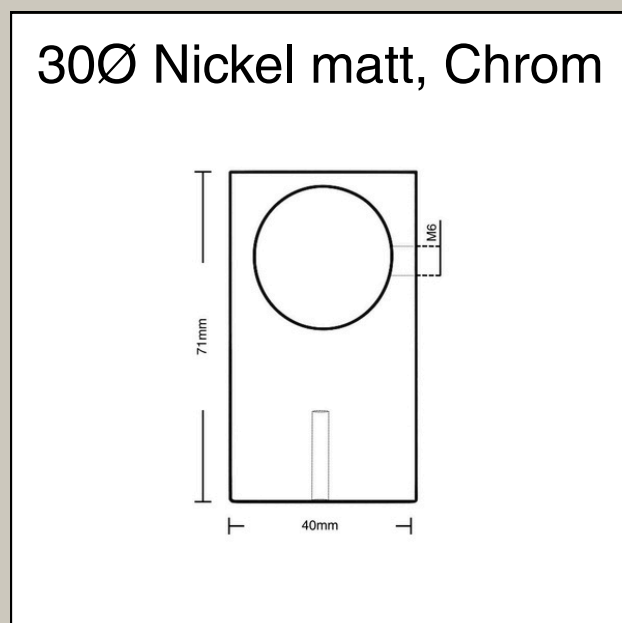
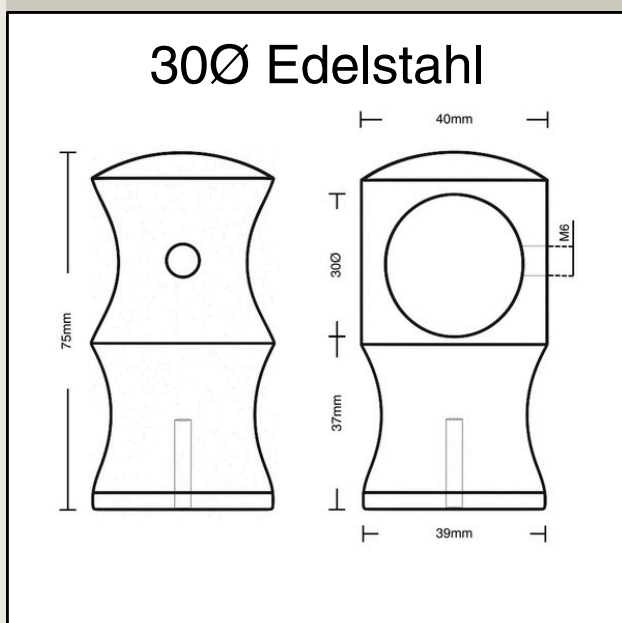
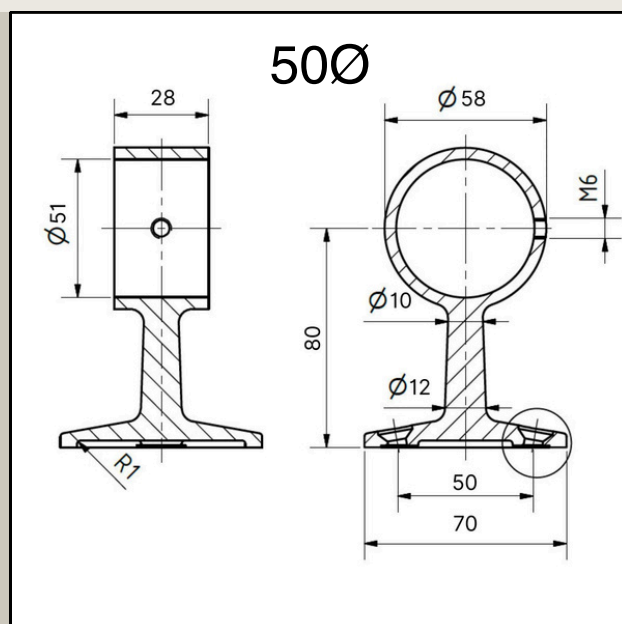
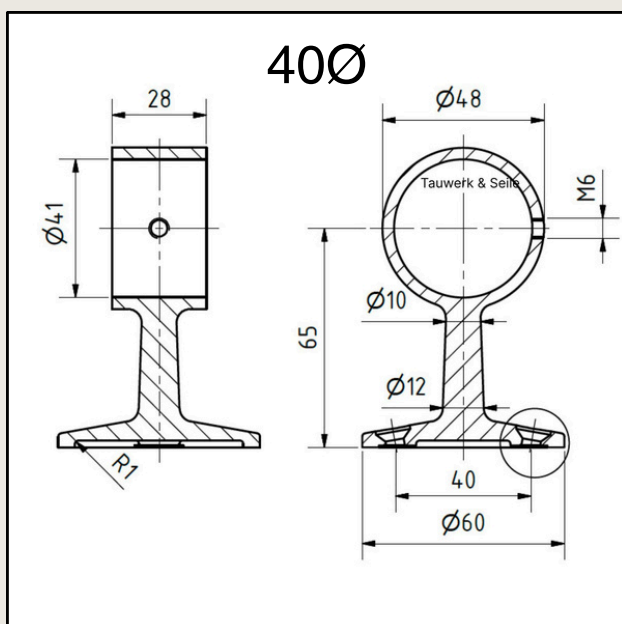


Seilträger Classic Line	2
Seilträger New Line	3
Seilendkappen	4
Seilendkappen Edelstahl	5
Seilendkappen mit Haken	6
Seilendkappen mit Ring	7
Seilendkappen mit Ring oder Haken Edelstahl	8
Wandhaken und Wandaugen	9
Abschluss-Endkappen mit Karabiner oder Ring	10
Seilendkappen mit Karabiner	11
Inneneckträger	12

Seilträger Classic Line

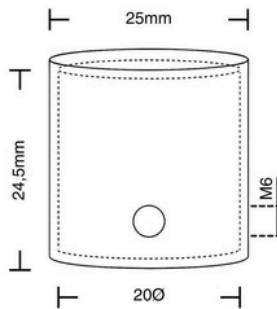


Seilträger New Line

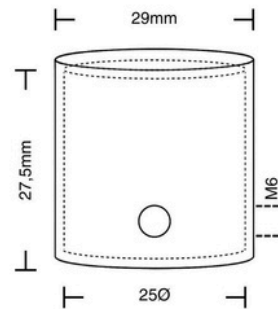


Seilendkappen

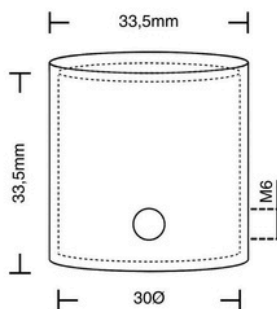
20Ø



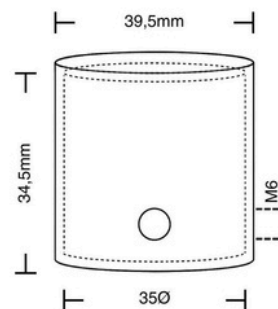
25Ø



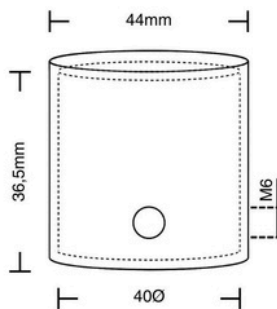
30Ø



35Ø



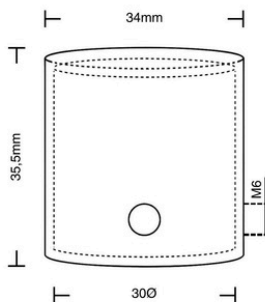
40Ø



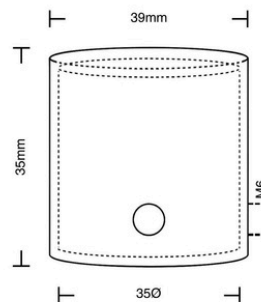
50Ø

Seilendkappen Edelstahl

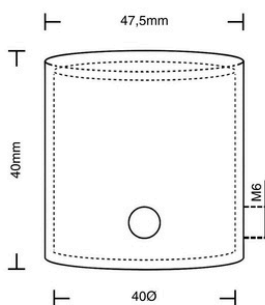
30Ø



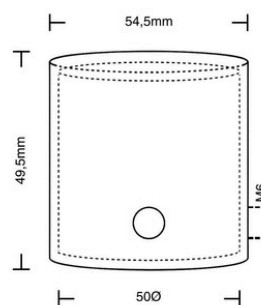
35Ø



40Ø

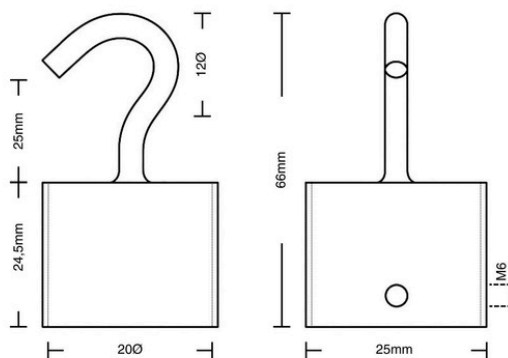


50Ø

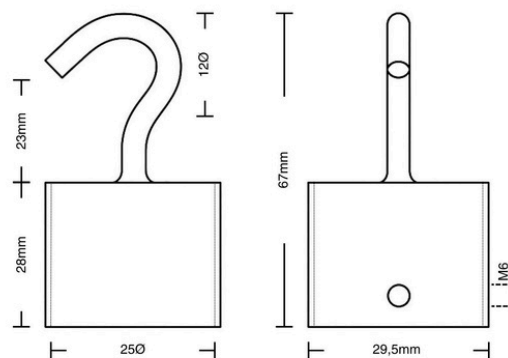


Seilendkappe mit Haken

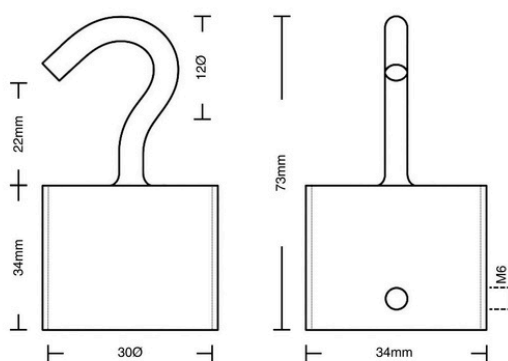
20Ø



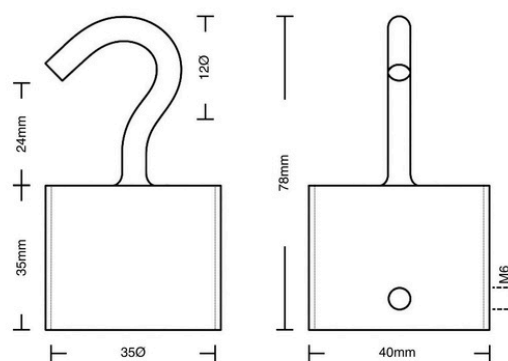
25Ø



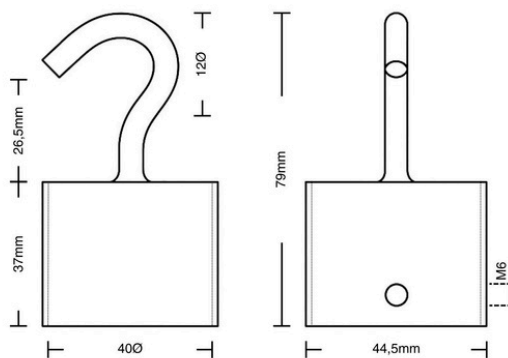
30Ø



35Ø

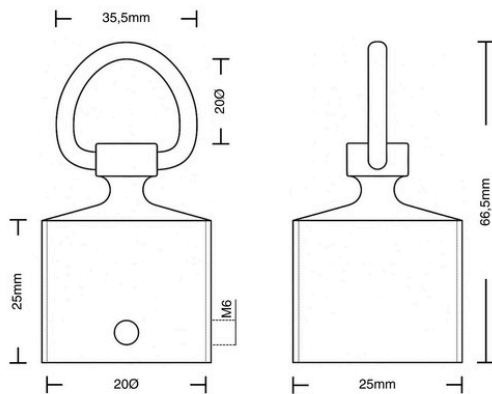


40Ø

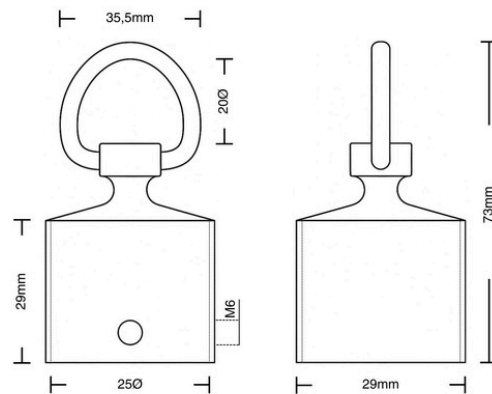


Seilendkappe mit Ring

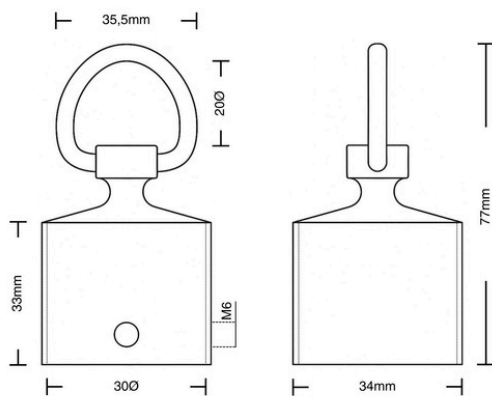
200Ø



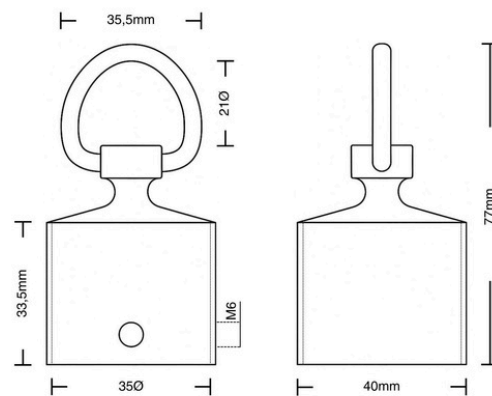
250Ø



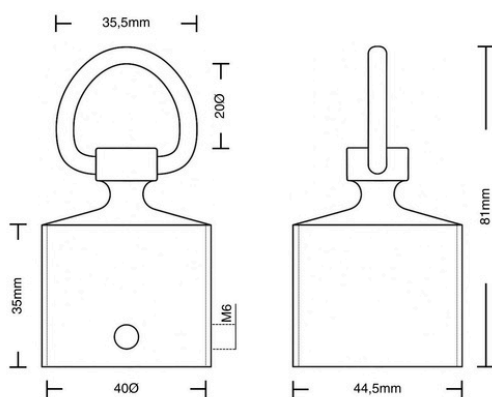
300Ø



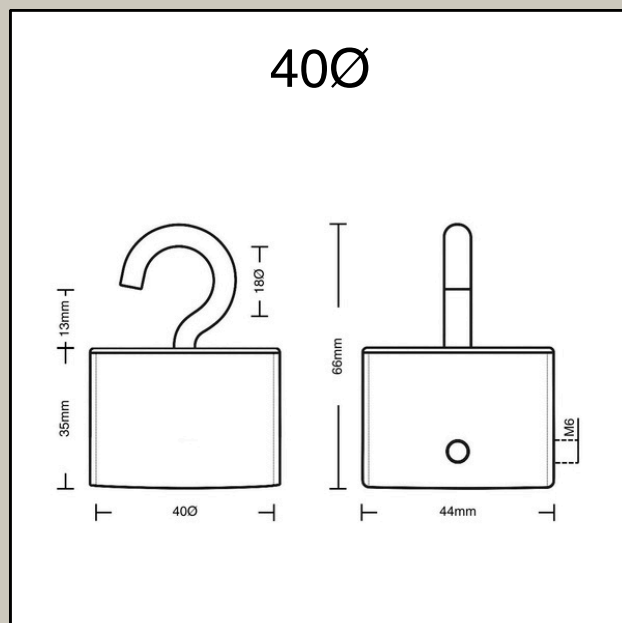
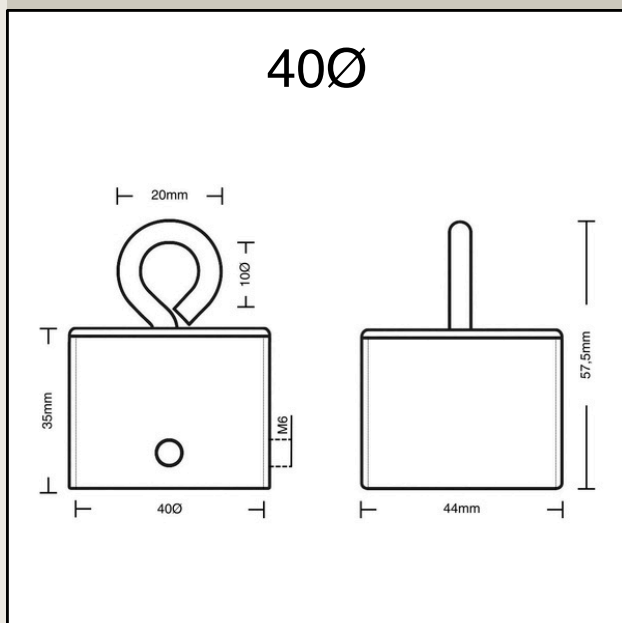
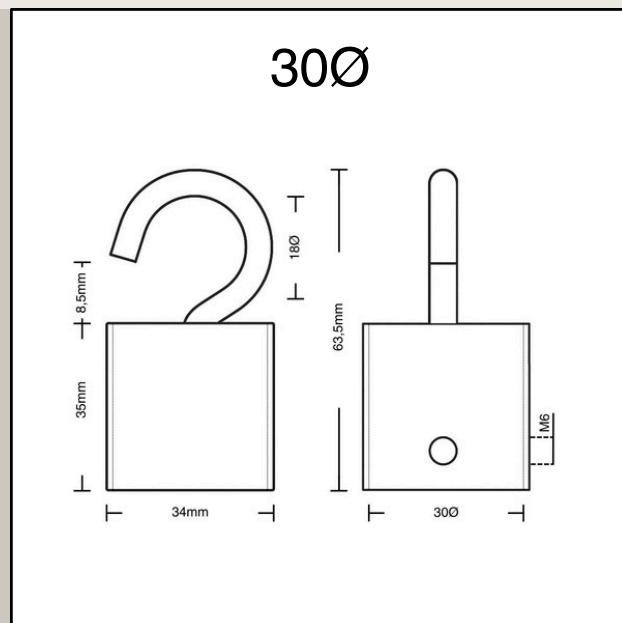
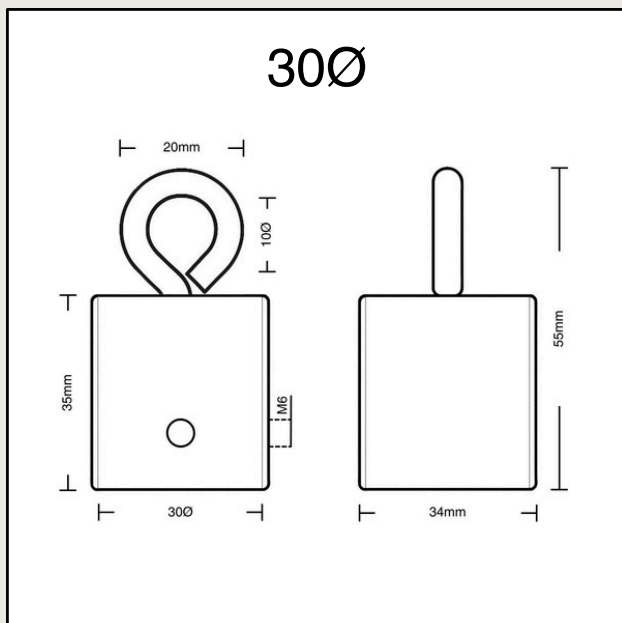
350Ø

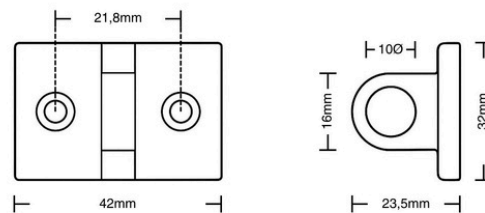
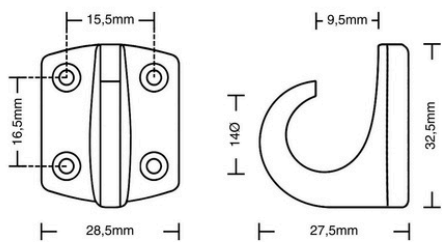


400Ø

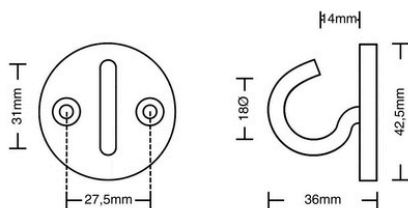


Seilendkappen mit Ring oder Haken (Edelstahl)



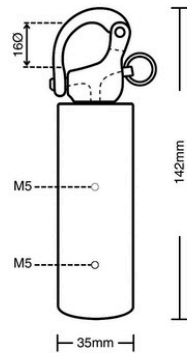


Diese Bauform gibt es nur in
Edelstahl

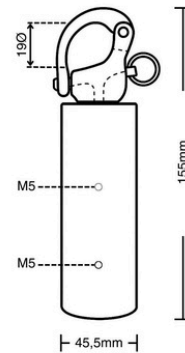


Abschluss-Endkappe mit Karabiner oder Ring

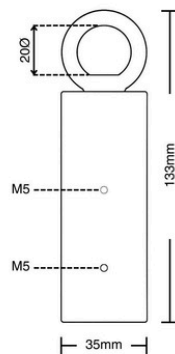
30Ø



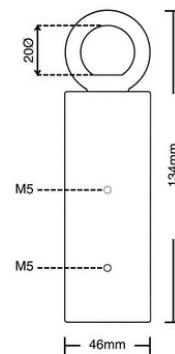
40Ø



30Ø

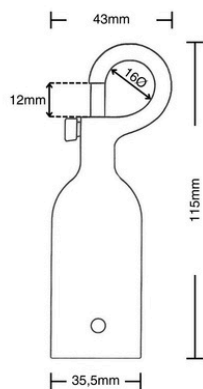


40Ø

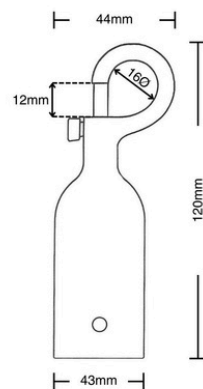


Seilendkappe mit Karabiner

30Ø

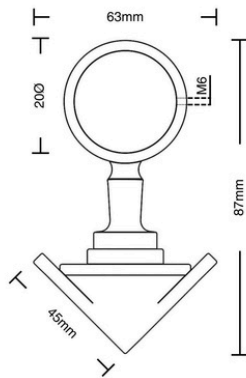


40Ø

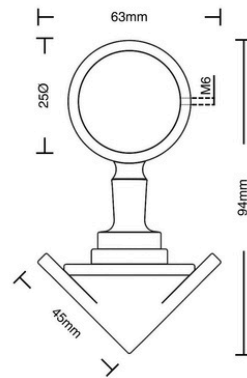


Inneneckträger

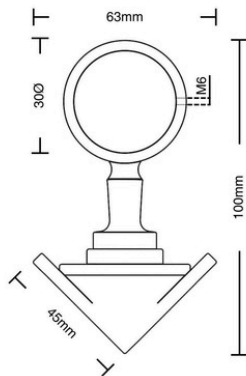
20Ø



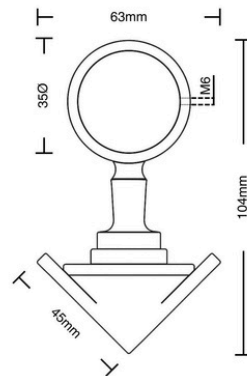
25Ø



30Ø



35Ø



40Ø

